

Tybenham Road Merton Park, SW19 3LB

£1,300,000 Freehold



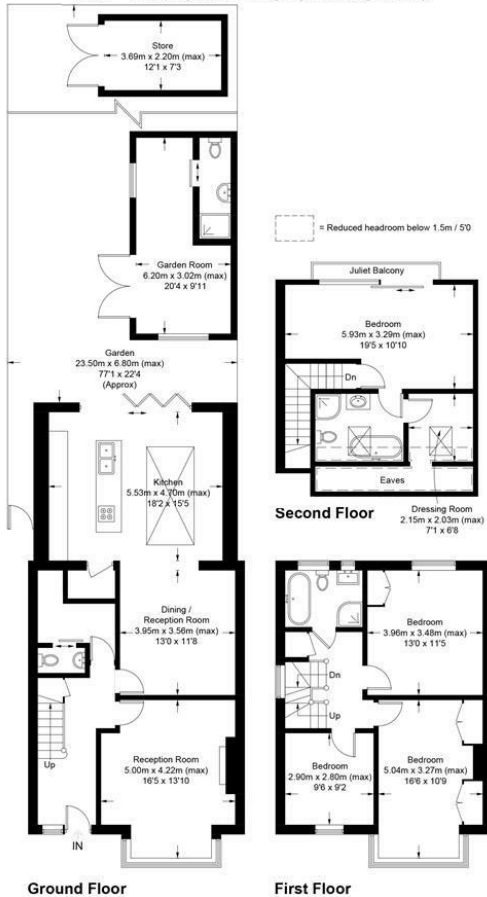
A beautifully presented, four bedroom, two bathroom, semi-detached family home located on this sought after road in Merton Park close to the highly regarded Merton Park Primary School. This wonderful property has a spacious hallway, a large front living room, useful utility/w/c and a stunning open-plan kitchen/living area with bi-fold doors. These open onto a great sized garden with a fantastic log cabin at the rear perfect for working from home. Upstairs are three good double bedrooms, a modern bathroom and a master with a dressing area and large en-suite in the converted loft. In addition to no onward chain there is also the benefit of off-street parking for two cars.

Tybenham Road, SW19

Approximate Gross Internal Area = 172.9 sq m / 1861 sq ft

Garden Room / Store = 26.7 sq m / 287 sq ft

Total = 199.6 sq m / 2148 sq ft (Including Eaves)



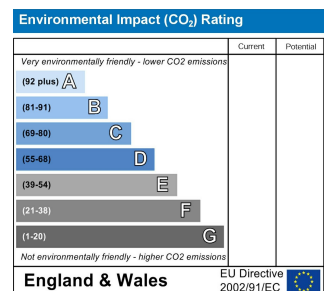
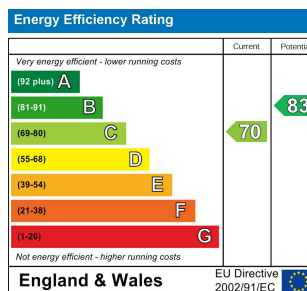
Ground Floor

First Floor

This floor plan is for representation purposes only and is not drawn to scale.
 The Gross Internal Area includes outbuildings shown on the plan.
 Whilst every attempt has been made to ensure the accuracy of the plan measurements of doors, windows and rooms are approximate only and should be checked before making any decisions reliant upon them.
 Copyright Bespokeplans.co.uk (ID831038)



- Semi-Detached Family home
- Beautifully Presented
- Four Bedrooms
- Two Bathrooms & Two Receptions
- No Onward Chain
- Large Log Cabin
- Close to Merton Park Primary School
- Sought After Area
- EPC Rating C
- Council Tax Band F



For Free Mortgage Quote and Best Mortgage Rates, call an Ellisons Mortgage Advisor on 020 8944 9494



Although these particulars are believed to be correct, their accuracy is not guaranteed and they do not form part of any contract.

Celebrating 30 years of successful Sales and Lettings in Merton

